



# St. Joseph Parish

6020 Old Antonia Rd. | Imperial, MO 63052

## **CORPUS CHRISTI CENTER** *Features & Usage Guidelines*



Thank you for your interest in the Corpus Christi Center at St. Joseph Parish in Imperial, Missouri.

We know that following your visit you may wish to refer back to the various details we have discussed during your time with us and to help with that, we have prepared this packet of materials.

Of course, please feel free to email or call us if you have additional questions. We find that our visitors have questions we had not yet anticipated and so we are always refining our presentation and we welcome the opportunity to be as informative as we can be!



## PHOTOS OF THE SPACE

Below left is a photo of the full hall and below right is a photo of the gathering space. The photo to the right shows the space decorated for a festive event.

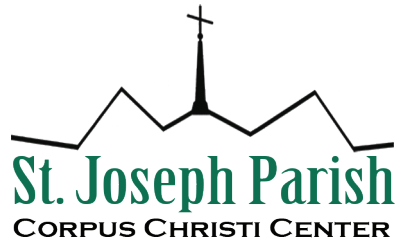




## LINEN OPTIONS

Use of the full hall includes a basic linen package (when applicable) that consists of 85" x 85" square tablecloths and napkins in white or a variety of colors. Either 120" round tablecloths or 132" round tablecloths may be substituted for an additional fee, but the longer lengths are only available in white, ivory, and black. For smaller parties, linen rentals may be available for an additional expense.





## PIPE AND DRAPE

Pipe and drape can be used to separate a space, as a photo backdrop, to cover a wall, or as a focal point. It is great for bridal and baby showers, birthday, graduation, and retirement parties. Our pipe and drape is included in full hall bookings.

For anything less than a full hall booking, please inquire about the usage fee. We offer black and white drape panels. Each panel is adjustable from 4'-10' height and 4'-10' wide.





## SPECIALTY COCKTAILS & CHAMPAGNE SERVICE

In addition to our bar packages, we offer specialty cocktails and champagne service as an add-on to the premium bar package. Listed below is our seasonal specialty cocktail menu. Specialty cocktails are available for smaller parties and are charged upon consumption. Please ask about pricing.

### *Specialty Cocktails*

#### **Aperol Spritz**

Prosecco, Aperol, club soda

#### **French 75**

Gin, Champagne, simple syrup, fresh lemon

#### **Mint Julep**

Bourbon, simple syrup, mint

#### **Mojito**

Rum, fresh lime juice, simple syrup, club soda, mint

#### **Moscow Mule**

Vodka, lime juice, ginger beer

#### **Paloma**

Tequila, grapefruit juice, lime juice, club soda

### *Champagne Toast*

A champagne toast for the head table is included in a full hall booking. Wish to include bubbles for your guests from the bar? Please inquire.



# CORPUS CHRISTI CENTER

## Usage Rates

Thank you for your interest in using the Corpus Christi Center!

On the parish website at <http://www.sjiparish.org/cc> you will find additional information about the Corpus Christi Center, including the calendar.

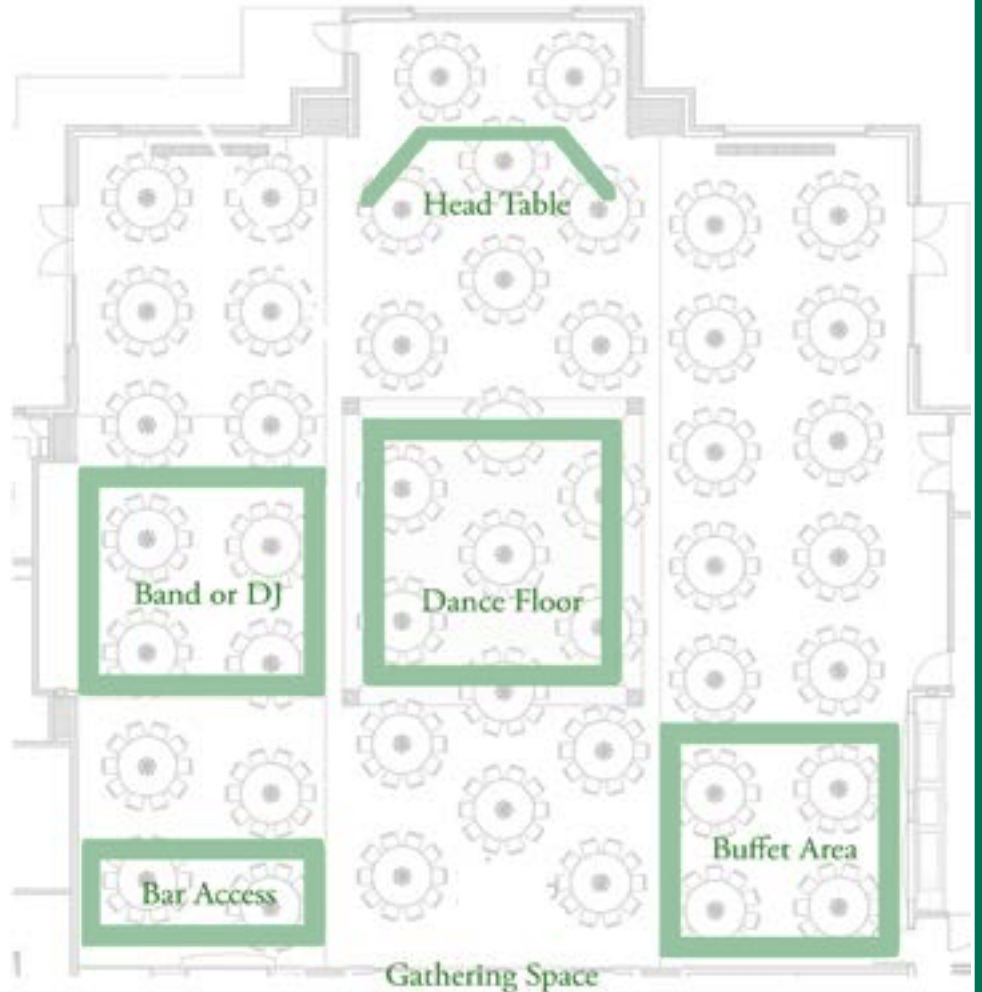
Please note that the number of tables and chairs that any particular layout might accommodate depends on whether or not the dance floor will be used and the need for any head tables, buffet tables, etc. Please inquire about your particular situation. *(last updated 8/1/2023)*

*For more information, please contact Heather Selsor at [hselsor@sjiparish.org](mailto:hselsor@sjiparish.org) or 636-464-1013 x111 or use your phone's camera to scan the QR code to go to the website.*



	Sunday through Friday ending by 3 pm, room use for 4 hours	Friday evening or Saturday
Room		
1/3 hall	Please contact Heather Selsor at <a href="mailto:hselsor@sjiparish.org">hselsor@sjiparish.org</a> or 636-464-1013 x111 for pricing information.	
2/3 hall		
full hall		

This is an architect's drawing of the full hall. Each table accommodates ten chairs and the Corpus Christi Center offers a maximum of 45 tables. However, an event typically requires that some areas be reserved for other uses. Some examples are shown but others might include a podium with microphone or use of the drop-down screens for multimedia. This drawing is only an example and there is great flexibility in configuring the room. Even when large areas are excluded, we have the option of spacing tables differently in other areas.





## AVAILABLE ADD-ONS

### ***Chargers***

Gold chargers are included with a full-hall booking. For anything less than a full-hall booking, please inquire about pricing.

Gold chargers, available for a full-hall booking

90 bronze chargers

250 silver chargers

140 red chargers

### ***Cylinder Vases***

Cylinder Vases are included with a full-hall booking and can be used with battery powered candles or lights only. No candles are permitted. For anything less than a full-hall, please inquire about pricing.

6" vases

7.5" vases

9" vases

### ***Round Mirror***

Mirrors are included in a full-hall booking. For anything less than a full-hall booking, please inquire about pricing.

### ***Glassware***

All drinks from the bar are served in ultra-clear plastic cups. Coffee is served in white paper cups. Water goblets and coffee cups are available; please inquire about pricing, regardless of the size of the hall used.

Water goblet

Coffee

Plastic

### ***Flatware***

Flatware is included in a full-hall booking. For anything less than the full-hall, please inquire about pricing.

Salad fork

Coffee spoon

Dinner fork

Dessert spoon

Knife

### ***Party Sets***

Includes black or white plastic or paper dinner and dessert plates, plastic cutlery, 16oz plastic cup and napkin. Please inquire about pricing.







# Beverage Menu

## Draft Beer

Bud Light, Budweiser,  
Bud Select, Michelob Ultra

## Spirits

Vodka, Gin, Whiskey,  
Bourbon, Amaretto, Rum

## Wines

### *Red Wines:*

Cabernet Sauvignon,  
Pinot Noir,  
Red Blend

### *White Wines:*

Chardonnay,  
Sauvignon Blanc,  
Pinot Grigio,  
Moscato

## Seltzers

*Bud Light Seltzers:*  
Black Cherry, Lime,  
Strawberry, Mango

## Soft Drinks

Coke, Diet Coke, Sprite,  
Sprite Zero, Club Soda,  
Tonic Water, Lemonade

### Bar Options

The bar in the Corpus Christi Center is located in the Gathering Space and may be accessed both from the Gathering Space and the main hall. The range of beverage options for a 4-hour service includes full bar with premium brands, full bar with house brands, beer/wine/soda only, beer/soda only, and soft drinks only, served by professional bartenders. No outside alcohol is permitted in the CCC and only those of legal drinking age will be served alcohol. Please inquire for pricing.

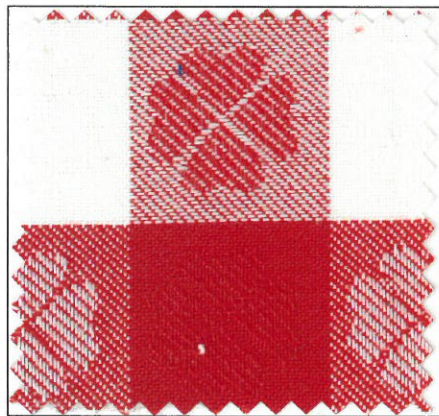


315 Lynch St.  
St. Louis, MO 63118  
314-865-4500

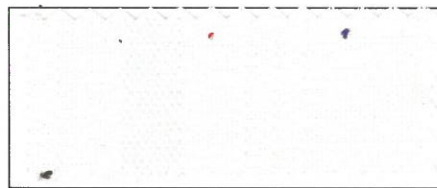


\* = Limited Availability

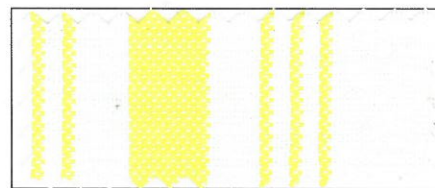
NAP	42 x 42	52 x 52	52 x 72	52 x 81	52 x 96	52 x 114	61 x 61	72 x 72	85 x 85	90 x 132	90 x 156	90" Rnd	108" Rnd	120" Rnd	132" Rnd
Beige	●*	●*							●						
Black	●	●*	●	●	●	●	●	●	●	●	●	●	●*	●	●
Chocolate	●*	●	●*												
Forest Green	●	●*						●	●		●				
Gold	●	●*				●*	●*								
Gray	●*	●	●						●*						
Ivory	●	●	●		●	●	●	●	●	●	●	●	●*	●	●
Maize	●*														
Maroon	●*	●*					●		●						
Navy Blue	●								●*						
Peach	●*					●*		●*							
Pink	●*					●*			●*						
Purple	●														
Red	●	●				●	●	●	●						
Royal Blue	●					●*		●*	●		●				
Rust	●														
Sandalwood	●	●				●*	●	●	●						
Seafoam	●					●*	●	●*							
Teal	●														
Wedgewood	●								●						
> White <	●	●	●	●	●	●	●	●	●	●	●	●	●	●	●
R/W Fancy Check	●							●							
Black Bistro	●														
Blue Bistro	●														
Red Bistro	●														
White Bistro	●														
Yellow Bistro	●														



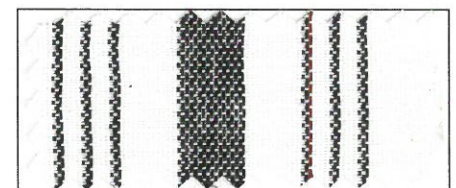
Red/White Fancy Check



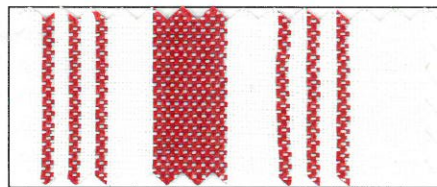
White Bistro



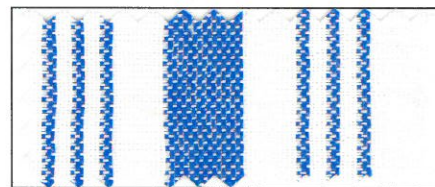
Yellow Bistro



Black Bistro



Red Bistro



Blue Bistro

Milliken  
**Signature Plus**  
Table Linens



NSF Protocol P413  
Hygienically Clean Napery in  
Commercial Laundry Operations  
AlSCO Signature® and Bon Appétit™  
Table Linens